

Technical Data Sheet



Catalog No. P20LF21-10

Characteristics

| | |
|---------------|----------|
| Phase | 1 |
| KVA | 10 |
| Primary | 208V |
| Secondary | 120/240V |
| Conductor | Aluminum |
| Temp. Rise | 115° C |
| Frequency | 60 HZ |
| Taps | -2@5% |
| ESS | No |
| Insulation | 180° C |
| Weathershield | N/A |
| Wall Bracket | Built-In |
| Weight(lbs) | 175 |
| Sound(dB) | 45 |

Notes

All units are UL listed and are designed in accordance with applicable NEMA, ANSI and IEEE standards.

Transformers are dry-type AA, non-ventilated NEMA 3R enclosure.

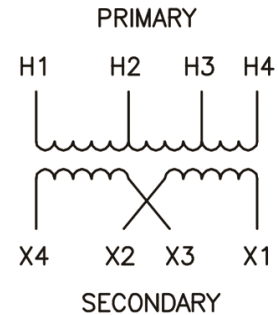
Transformers are wall mounted. Wall mounting bracket is built into the enclosure.

Paint color is ANSI 61.

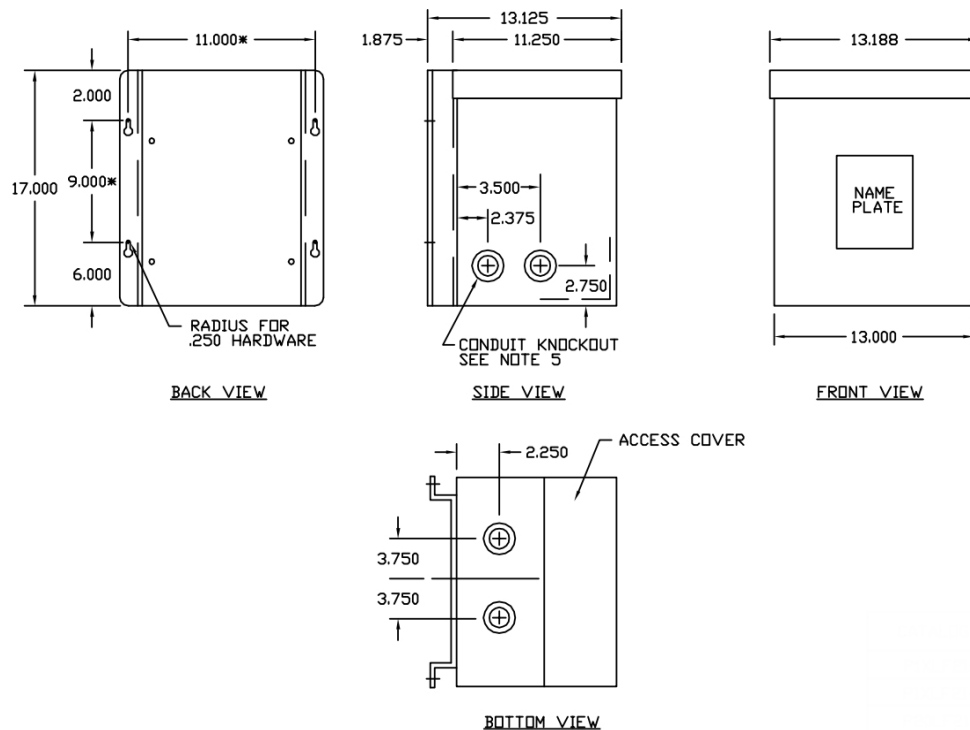
AMP Ratings

| | |
|--------------------------|-------|
| Line In (Primary) @ 208V | 48.1A |
| Load (Secondary) @ 120V | 83.3A |
| Load (Secondary) @ 240V | 41.7A |

Wiring Diagram - 6



| VOLTS | CONNECTIONS | LINE LEADS |
|---------|--------------|------------|
| 208 | | H1, H4 |
| 198 | | H1, H3 |
| 187 | | H1, H2 |
| 240 | X2-X3 | X1, X4 |
| 240/120 | X2-X3 | X1, X2, X4 |
| 120 | X1-X3, X2-X4 | X1, X4 |



Outline No: 05A1466